

Power Boost for End-users

Charge faster without risking fuse tripping

Maximize your charging speed by adapting to your home's real-time power demand. With Power Boost, your charge is intelligently managed to ensure it stays within your home's power capacity. When appliances are in use, the charge slows down, and when they turn off, Power Boost redirects the power back to your EV. The result is an optimized charge for maximum efficiency and safety, while avoiding costly electrical upgrades.

What's in it for the End-user?

Peace of mind

Charge your EV anytime without risking fuse tripping



Cost savings

Simply adding a power meter means there is no need for expensive electrical upgrades



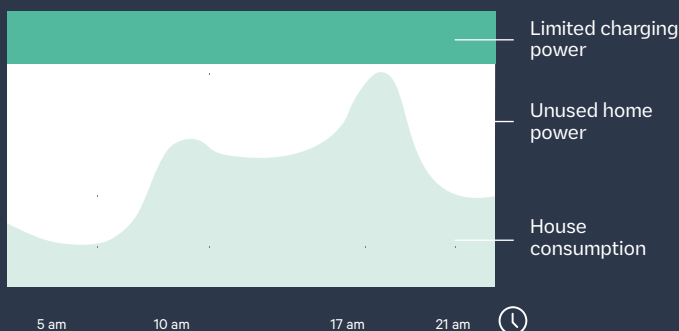
+15% Increased charging speed*

Faster charging capacity without the need for electrical upgrades

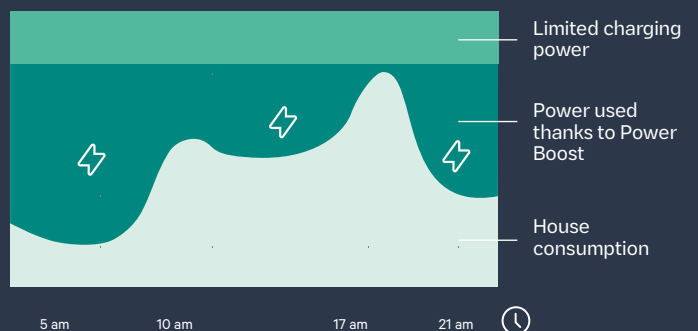


How does it maximise power?

Static Power Limit without Power Boost



Boosted Capacity thanks to Power Boost 






With Power Boost, you always charge at the highest speed possible, based on your home's real-time power demand.

**This value has been calculated using real use cases for a typical Single-Family Home and typical charging habits with common power limitations. Note that the boosted capacity calculation could vary on a case to case basis. For more information get in touch with our pre-sales team.*

Power Boost for Installers

Offer added value to your customers

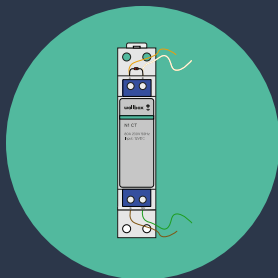
What's in it for the Installer?

-  **Offer better customer experience**
By providing best value for money to your customer
-  **Upsell and improve margins**
Add a power meter and offer Power Boost for additional revenue
-  **Fewer callbacks**
Installing a power meter reduces issues like fuse tripping and slow charging



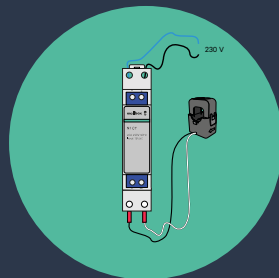
How to install a power meter?

1



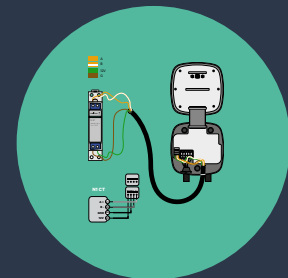
Identify the point of installation of the Power Meter in your main fuse board.

2



Install the Power Meter* according to the meter instruction guide.

3



Install the communication cable between the power meter and the Wallbox charger and configure the charger according to the guide.

**Installation may differ when using a power clamps configuration.*